



HIGH DEFINITION GOLF™

THE TECHNOLOGY LEADER IN GOLF SIMULATION



Pebble Beach®

Pebble Beach is probably the greatest meeting of land and sea in American Golf and likely the most extensive. Pebble Beach Golf Links® was the first public course to be selected as the No.1 golf course in America by Golf Digest in 2001. It has been the site of golf's most prestigious tournaments, including the annual AT&T Pebble Beach National Pro-Am, and five U.S. Open Championships. Pebble Beach will host another U.S. Amateur in 2018 and its sixth U.S. Open in 2019. Truly the most coveted course in the world to play!



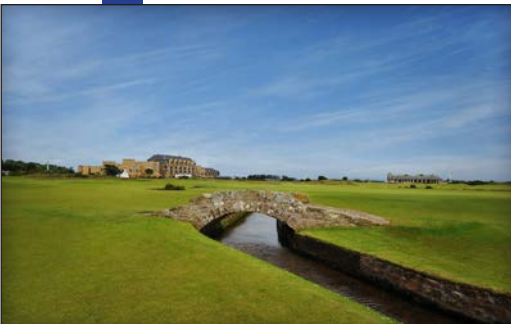
Spyglass Hill®

Spyglass Hill is without question one of the top public golf courses in the U.S. Ranked #48 in the U.S, it is located on the Pebble Beach peninsula. The PGA TOUR®, consistently lists Spyglass Hill's holes 6, 8 and 16 among the toughest on the TOUR, and during the 1999 US Amateur, the stroke average of the field during medal play was in excess of 79.



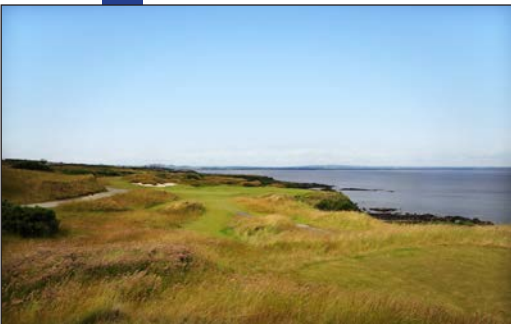
Spanish Bay®

The Links at Spanish Bay was built on vast sandy wasteland ideally suited for creating a true coastal Scottish links-style course. Development began in 1985, and was planned to protect the native dunes habitat. Prior championship tournaments included the 1993 Shivas Irons Games of the Links and NorCal Toyota Challenge.



The Old Course, St. Andrews®

If there is a single course that golfers aspire to play once in their lifetime, it is the Old Course at St. Andrews, Scotland. This original links course is the ancient home of golf – where the sport was first played 600 years ago. It remains a real test for today's champions and has hosted more Open Championships than any other venue.



The Castle Course, St. Andrews®

Set on a rugged cliff line overlooking the ancient town, the newest course at St. Andrews combines breathtaking views with a memorable golfing challenge. Designed by David Kidd, creator of Bandon Dunes, The Castle Course won several international awards in its first year of opening and made Golf Digest's Top 100 ranking almost immediately.

HD Golf Course List



The Jubilee Course, St. Andrews®

Named after Queen Victoria's Diamond Jubilee celebration in 1897, the Jubilee Course is situated on a thin strip of land beside the sea. Originally intended for Victorian ladies and beginners, it has evolved into the longest and most challenging course at St. Andrews.



Pinehurst No. 2

Pinehurst has been the site of more championships than any other golf course in the country. Pinehurst welcomes the U.S. Open and U.S. Women's Open Championships in 2014.



Bethpage Black

The Bethpage Black Course is the most difficult of the five golf courses at Bethpage State Park on Long Island. In 2002 the Black Course became the first publicly owned and operated course to host the U.S. Open. It became known as one of the most difficult courses in the tournaments history. In fact, it was such a hit that Bethpage Black also hosted the 2009 U.S. Open and will be hosting the 2019 PGA Championship and the 2024 Ryder Cup.



Pacific Dunes

Pacific Dunes was rated the No.1 resort golf course in the country in 2005 by Golfweek magazine. Designed by Tom Doak, Pacific Dunes opened in 2001. This course doesn't feel like it was built as much as it was discovered. Rippling fairways remain just as they were found and natural bunkers line the landscape as they have for centuries. The course emerges from shore pines to spectacular 60-foot sand dunes. When the wind blows, precise approach shots are a necessity.



Doral Blue Monster

The Blue Monster at Doral played host to the Doral Open on the PGA Tour from 1962 to 2006. Since 2007 the WGC-CA Championship has made its home at the Blue Monster. In 2009, the Blue Monster joined the PGA Tour's Tournament Players Club network of courses and re-branded as the TPC Blue Monster at Doral. The famous 18th hole, with its signature fountain, was ranked by GOLF Magazine as one of the Top 100 Holes in the World.

HD Golf Course List



PGA National

PGA National Golf Club, the home of the Professional Golfers' Association of America, is located at the PGA National Resort & Spa in Palm Beach Gardens, Florida. The Golf Club facilities include four championship, 18-hole golf courses within PGA National. The Champion course was opened on November 17, 1981 and is the home of the Honda Classic each spring on the PGA TOUR. A must-play on any avid golfer's list! It was the site of the 1983 Ryder Cup and the 1987 PGA Championship and the permanent home for the PGA Seniors' Championship from 1982-2000.



Cabo Del Sol

This stunning Ocean Course is a signature Jack Nicklaus design, ranking in the top 100 courses worldwide, with its 5th & 17th holes being ranked in the top 500 in the world by Golf Magazine. Stretching along the dramatic scenery of the Sea of Cortez, this course has been hailed as the "Mexican Pebble Beach" by Pacific Golf Magazine.



Kiawah Island

The Ocean course at Kiawah has hosted the 2007 Senior PGA, the 1991 Ryder Cup, the 1997 and 2003 World Cups, the 2001 UBS Cup and 2005 PGA National Championship. In 2012 Kiawah Island Golf Resort will host the 94th PGA Championship, only the fourth course to host each of the PGA of America's major championships. The Ocean Course just ranked 25th in Golf Digest's 100 Greatest U.S. Golf Courses List and 4th on Best Public Course List.



Torrey Pines

Torrey Pines golf course is located on the coastal bluffs of the Torrey Pines Mesa in La Jolla, CA, a Southern California coastal community. Both Torrey Pines Golf Courses are Championship 18-hole golf courses and are played by PGA TOUR® professionals during the Buick Invitational of California held each year in January or February.



Harbour Town

The Harbour Town Golf Links hosts the Verizon Heritage golf tournament on the PGA TOUR®. The course is located in the Sea Pines Plantation of Hilton Head Island, South Carolina. Golf Magazine has rated the course No.1 in South Carolina. Architect Pete Dye designed the course with help from Jack Nicklaus.

HD Golf Course List



Troon North

The Monument course was designed by the team of legendary golfer Tom Weiskopf and architect, Jay Morrish. It stretches to 7,028 yards and is a par 72. With wide fairways that wind through lush desert vegetation, natural washes and towering saguaros. The course was listed as No. 8 in America's Top 100 Non-Private Golf Courses by Golf Magazine.



Banff Springs

The Fairmont Banff Springs Golf Course is a mountain course with challenging layout set in the heart of Canada's Rocky Mountains. Banff Springs offers breathtaking views in every direction and a magnificent layout that thrills every golfer fortunate enough to spend a day here. Amateurs and professionals alike are constantly amazed by its panoramic challenges.



Quail Hollow

This exclusive club is host to the annual PGA Tour Wells Fargo Championship, and boasts some of the nicest scenery in golf. This newly redesigned course will host the top golf professionals at the 2017 PGA Championship. Quail Hollow Club's 7,469-yard, par-72 layout has maintained praise from Tour professionals for its unique blend of a demanding and risk-reward layout. The final three holes "the Green Mile" have consistently been ranked the toughest finish on the PGA Tour.



Casa de Campo

If you only play one course in the Caribbean, it should be the Teeth of the Dog, a Pete Dye masterpiece that rivals Pebble Beach Golf Links in setting and beauty. The Teeth of the Dog is one of the world's great seaside golf experiences with it's ocean level play and feeling of the spray of the waves on a couple of holes. Ranked as the No.1 course in the Caribbean and 43rd in the top 100 courses, worldwide, by Golf Magazine.



Rich Harvest Farms

Rich Harvest Farms is a private, 18-hole, 1,800-acre golf course and country club near Sugar Grove, Illinois. The golf course is an extreme test of a golfer's skill. Measuring well over 7,700 yards from the professional tees, the course requires precision with every shot. The famous fourth hole, Devil's Elbow, has one of the most intimidating tree-lined tee boxes and fairways of any golf course. Rich Harvest Farms hosted the 2015 Palmers Cup. This course has been the site of numerous amateur, collegiate, and professional tournaments.

HD Golf Course List



Cabot Links

Cabot Links, located in Inverness, Cape Breton provides a unique panoramic vista and a course designed to inspire you at each and every turn. Set in a rugged oceanfront landscape, with brilliant ocean vistas from every hole, Cabot Links is indeed an authentic links course. It is beautifully natural, with knolls and bumps on the fairways and greens providing challenges for the most avid and appreciable golfer. Established in 2012, Cabot Links has catapulted up the ranks, ranking 42 out of the top 100 golf courses in the world!



Princeville

Like the rest of Princeville at Hanalei, the Prince Golf Course enjoys magnificent views from 300 feet above the Pacific Ocean. It's not the scenery that earned the Prince Course Golf Digest's rating as "Hawaii's No. 1 Golf Course," it's the incredible design Robert Trent Jones, Jr. created to turn rolling terrain into a links-style golf course. This 18-hole, par 72 golf course climbs slopes and careens down hills as a demanding layout that calls for your best-planned shots.



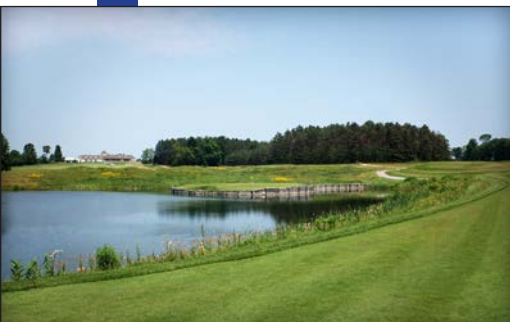
Bay Hill

The Bay Hill Club & Lodge in Orlando Florida is Arnold Palmer's winter home and host course for the Arnold Palmer Invitational. Bay Hill made the 2010 Golf Magazine Top 100 You Can Play list coming in at No. 51.



Nicklaus North

Winner of numerous awards since its opening in 1996, Nicklaus North has played host to events such as the Skins Game and the Shell's Wonderful World of Golf, welcoming some of golf's biggest names such as Jack Nicklaus, Nick Faldo, Ernie Els, Greg Norman, Fred Couples, John Daly, Vijay Singh and Stephen Ames.



Wooden Sticks

Wooden Sticks, architect Mr. Ron Garl and his team worked diligently to ensure that every aspect of the golf experience reflects the spirit found in some of today's most famous golf holes. 12 of the 18 holes at Wooden Sticks were each inspired by a different famous golf hole from the PGA TOUR®, including Augusta and TPC Sawgrass.

HD Golf Course List



Pete Dye Course at French Lick

HD Golf is delighted to announce the release of the famed Pete Dye Course at French Lick. Opened to the public in 2009, this Indiana, USA located course is revered for its narrow, immaculate fairways and rugged, intense terrain. 'Volcano' bunkers, 3 lakes and awe-inspiring views make this course decidedly unique and beautiful.



Wolf Creek

HD Golf is delighted to offer Wolf Creek, located in Mesquite, Nevada. Since opening in 2000, golfers from all over the world have travelled to experience a one of a kind golf adventure. With regularity, Wolf Creek is mentioned as a bucket list course with other courses such as Pebble Beach, Black Wolf Run, and Bandon Dunes. After finishing all eighteen holes, you are hard pressed to come up with just one signature hole and more often than not amazed with the picturesque beauty of the course rather than the score you shot.



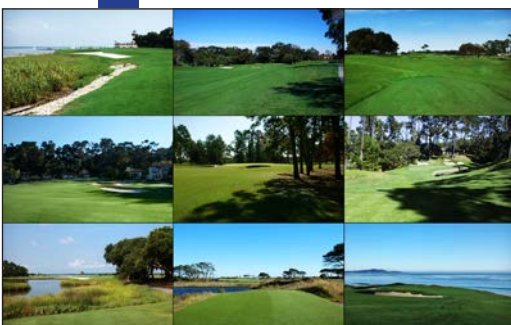
Kettle Creek

Formerly known as the "Marr Farm", this parcel of property has been transformed into a 5,185 yard par 67, 18 hole golf course. The property's hilly terrain, well forested slopes, covered bridge and 3 acres of pond with swans help give the course its character. Kettle Creek is an excellent executive course for beginners.



Famous Par 3's

A selection of challenging Par 3 holes from the HD Golf championship course library.



World Executive

An exciting 18 hole course featuring some of the most challenging holes from the HD Golf championship course library.

HD Golf Course List



Championship Course #1

HD Golf™ COMPILATION COURSES - Play the world's greatest holes combined into single, spectacular courses.



Championship Course #2

HD Golf™ COMPILATION COURSES - Play the world's greatest holes combined into single, spectacular courses.